

**HNRNPH1 Antibody (N-term)**  
**Affinity Purified Rabbit Polyclonal Antibody (Pab)**  
**Catalog # AP20061a****Specification**

---

**HNRNPH1 Antibody (N-term) - Product Information**

Application	WB,E
Primary Accession	<a href="#">P31943</a>
Other Accession	<a href="#">Q6AY09</a> , <a href="#">P70333</a> , <a href="#">Q3SZF3</a> , <a href="#">Q8VHV7</a> , <a href="#">Q35737</a> , <a href="#">NP_005511.1</a>
Reactivity	Human
Predicted	Mouse, Rat, Bovine
Host	Rabbit
Clonality	Polyclonal
Isotype	Rabbit IgG
Calculated MW	49229
Antigen Region	48-77

**HNRNPH1 Antibody (N-term) - Additional Information****Gene ID** 3187**Other Names**

Heterogeneous nuclear ribonucleoprotein H, hnRNP H, Heterogeneous nuclear ribonucleoprotein H, N-terminally processed, HNRNPH1, HNRPH, HNRPH1

**Target/Specificity**

This HNRNPH1 antibody is generated from rabbits immunized with a KLH conjugated synthetic peptide between 48-77 amino acids from the N-terminal region of human HNRNPH1.

**Dilution**

WB~~1:1000

E~~Use at an assay dependent concentration.

**Format**

Purified polyclonal antibody supplied in PBS with 0.09% (W/V) sodium azide. This antibody is purified through a protein A column, followed by peptide affinity purification.

**Storage**

Maintain refrigerated at 2-8°C for up to 2 weeks. For long term storage store at -20°C in small aliquots to prevent freeze-thaw cycles.

**Precautions**

HNRNPH1 Antibody (N-term) is for research use only and not for use in diagnostic or therapeutic procedures.

**HNRNPH1 Antibody (N-term) - Protein Information**

**Name** HNRNPH1

**Synonyms** HNRPH, HNRPH1

**Function** This protein is a component of the heterogeneous nuclear ribonucleoprotein (hnRNP) complexes which provide the substrate for the processing events that pre-mRNAs undergo before becoming functional, translatable mRNAs in the cytoplasm. Mediates pre-mRNA alternative splicing regulation. Inhibits, together with CUGBP1, insulin receptor (IR) pre-mRNA exon 11 inclusion in myoblast. Binds to the IR RNA. Binds poly(RG).

**Cellular Location**

Nucleus, nucleoplasm.

**Tissue Location**

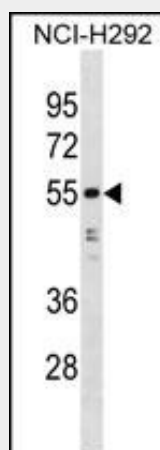
Expressed ubiquitously.

### **HNRNPH1 Antibody (N-term) - Protocols**

Provided below are standard protocols that you may find useful for product applications.

- [Western Blot](#)
- [Blocking Peptides](#)
- [Dot Blot](#)
- [Immunohistochemistry](#)
- [Immunofluorescence](#)
- [Immunoprecipitation](#)
- [Flow Cytometry](#)
- [Cell Culture](#)

### **HNRNPH1 Antibody (N-term) - Images**



HNRNPH1 Antibody (N-term) (Cat. #AP20061a) western blot analysis in NCI-H292 cell line lysates (35ug/lane). This demonstrates the HNRNPH1 antibody detected the HNRNPH1 protein (arrow).

### **HNRNPH1 Antibody (N-term) - Background**

This gene belongs to the subfamily of ubiquitously expressed heterogeneous nuclear ribonucleoproteins (hnRNPs). The hnRNPs are RNA binding proteins and they complex with heterogeneous nuclear RNA (hnRNA). These proteins are associated with pre-mRNAs

in the nucleus and appear to influence pre-mRNA processing and other aspects of mRNA metabolism and transport. While all of the hnRNPs are present in the nucleus, some seem to shuttle between the nucleus and the cytoplasm. The hnRNP proteins have distinct nucleic acid binding properties. The protein encoded by this gene has three repeats of quasi-RRM domains that bind to RNAs. It is very similar to the family member HNRPF. This gene is thought to be potentially involved in hereditary lymphedema type I phenotype. [provided by RefSeq].

#### **HNRNPH1 Antibody (N-term) - References**

Van Dusen, C.M., et al. Mol. Cell. Biol. 30(10):2552-2562(2010)  
Russo, A., et al. Biochim. Biophys. Acta 1799 (5-6), 419-428 (2010) :  
Ohe, K., et al. J. Biochem. 147(5):651-659(2010)  
Rauch, J., et al. Cancer Res. 70(4):1679-1688(2010)  
Fisette, J.F., et al. RNA 16(1):228-238(2010)